



LARDIS CONSULTING

Consultants

CIVIL & STRUCTURAL ENGINEERS

ARCHITECTS

QUANTITY SURVEYORS

SPECIAL STRUCTURES - BUILDINGS – SCHOOLS - INDUSTRIAL PLANS

ROADS & HIGHWAYS – BRIDGES

**STRUCTURAL REPAIRS & STRENGTHENING, SEISMIC STRENGTHENING,
MAINTENANCE**



SERVICES

SCHEME AND DETAIL DESIGNS

CONSTRUCTION CONTRACT DOCUMENTATION

BILL OF QUANTITIES

TENDERING PROCEDURES

SITE SUPERVISION

CONSULTANTS COORDINATORS

STRUCTURAL APPRAISALS

PROJECT MANAGEMENT

PROPERTY INVESTMENT ADVISORS



PROJECTS

CIVIL & STRUCTURAL ENGINEERING

SPECIAL PROJECTS

COMMERCIAL PROJECTS
HOSPITAL AND RELATED PROJECTS
SCHOOL PROJECTS

RESIDENTIAL PROJECTS

SEISMIC STRENGTHENING PROJECTS
MAINTENANCE – REPAIRS – STRENGTHENING PROJECTS

FOUNDATION PROJECTS

INDUSTRIAL PLANS

CAR PARKS

ROAD & HIGHWAY PROJECTS

BRIDGE PROJECTS
BRIDGE STRENGTHENING
ASSESSMENT STRENGTHENING MAINTENANCE OF STONE
BRIDGES

ARCHITECTURAL PROJECTS

LANDSCAPE PROJECTS
COMMERCIAL PROJECTS
RESIDENTIAL PROJECTS
HOUSING PROJECTS
INTERNAL DECORATION PROJECTS

QUANTITY SURVEYING PROJECTS



CIVIL & STRUCTURAL ENGINEERING

SAMPLES OF SPECIAL PROJECTS



PARTICIPATION FOR CHECKING DESIGNS & DRAWINGS OF THE TOP 70 LEVEL STEEL SPIRE

BURJ KHALIFA TOWER
The world's tallest building 828 m tall
(MAIN SITE CONSULTANT: HYDER CONSULTING)



CIVIL & STRUCTURAL ENGINEERING **SAMPLES OF SPECIAL PROJECTS**



CHECKING MAIN CONTRACTOR'S DESIGNS & DRAWINGS FROM PILES TO 1ST FLOOR

BURJ KHALIFA TOWER
The world's tallest building 828 m tall
(MAIN SITE CONSULTANT: HYDER CONSULTING)



CIVIL & STRUCTURAL ENGINEERING **SAMPLES OF SPECIAL PROJECTS**



PROJECT: **KIND ANGEL THE KEEPER OF THE WORLD** **LOCATION: CYPRUS**

Tallest status in the world
135m.tall

Responsibilities:

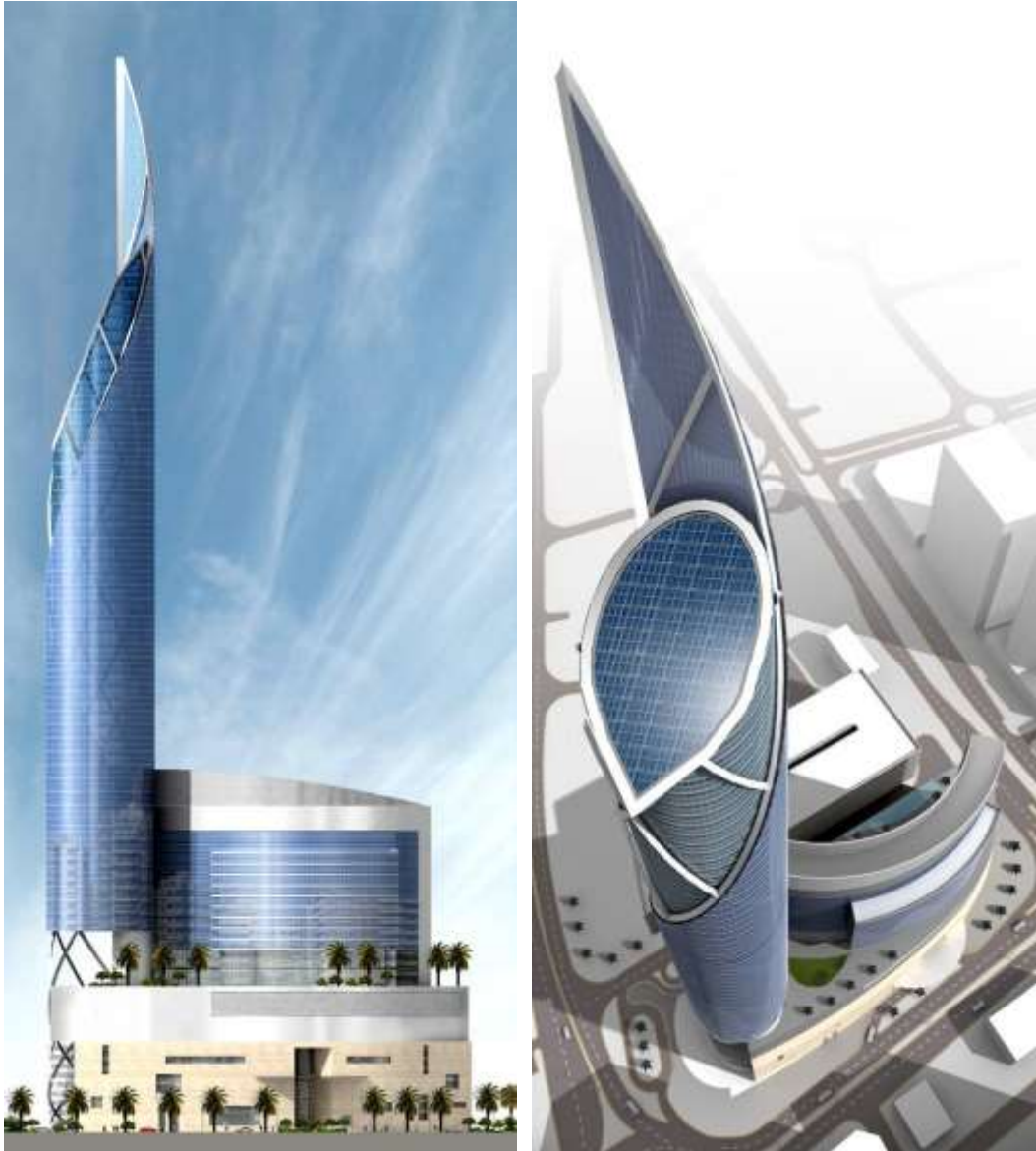
Consultant's coordinator, Civil & Structural Engineers.

The project stopped after preliminary Architectural, Civil & Structural Engineering preliminary designs were completed.



CIVIL & STRUCTURAL ENGINEERING **SAMPLES OF SPECIAL PROJECTS**

The project stopped after preliminary Architectural, Civil & Structural Engineering preliminary designs were completed.

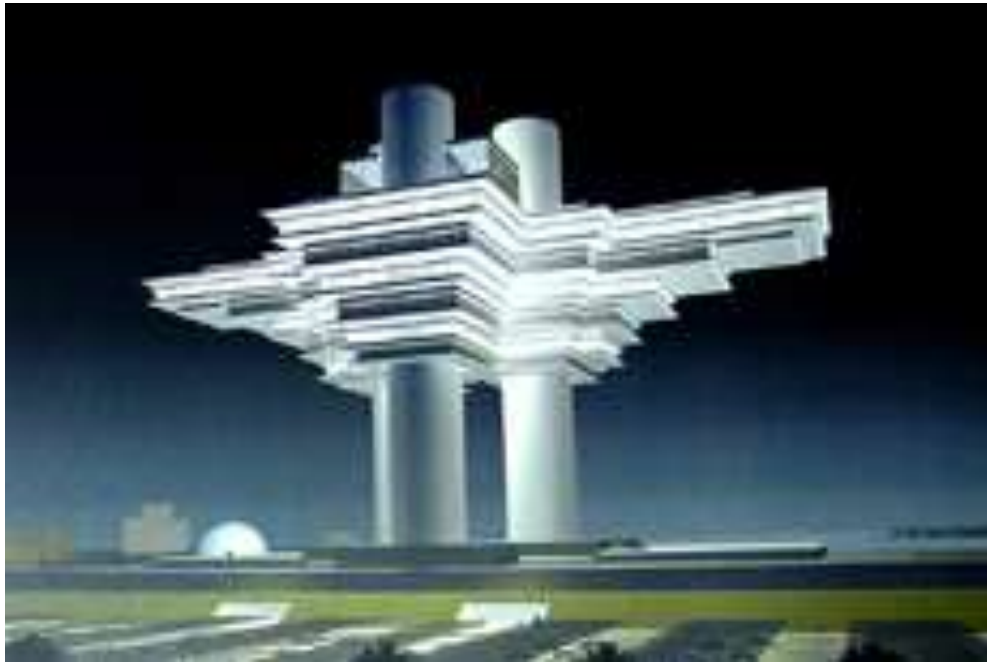


Capital Tower Kuwait **300m Tall.**

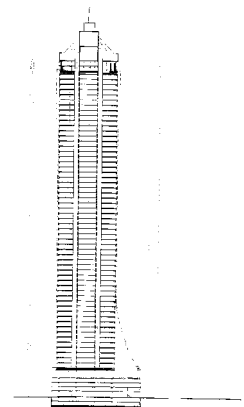
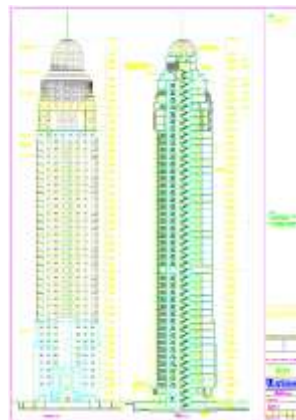
Participation in concept design, appointed as structural engineer. The contract was not materialized due to lack of assisting resources in Cyprus.



CIVIL & STRUCTURAL ENGINEERING **SAMPLES OF SPECIAL PROJECTS**



Project: Qatar National Library, 110m tall 56m cantilever
Involvement: Review of Structural drawings for Steel Fabricator for Design & Build Tender.



Assistance to concept and final designs for a number of High Rise Buildings



CIVIL & STRUCTURAL ENGINEERING **SAMPLES OF SPECIAL PROJECTS**

NICOSIA RACE CLUB ROOF GRANDSTAND **ARCHITECTS – ENGINEERS**



All supported on an old structure, which the grandstand strengthens.



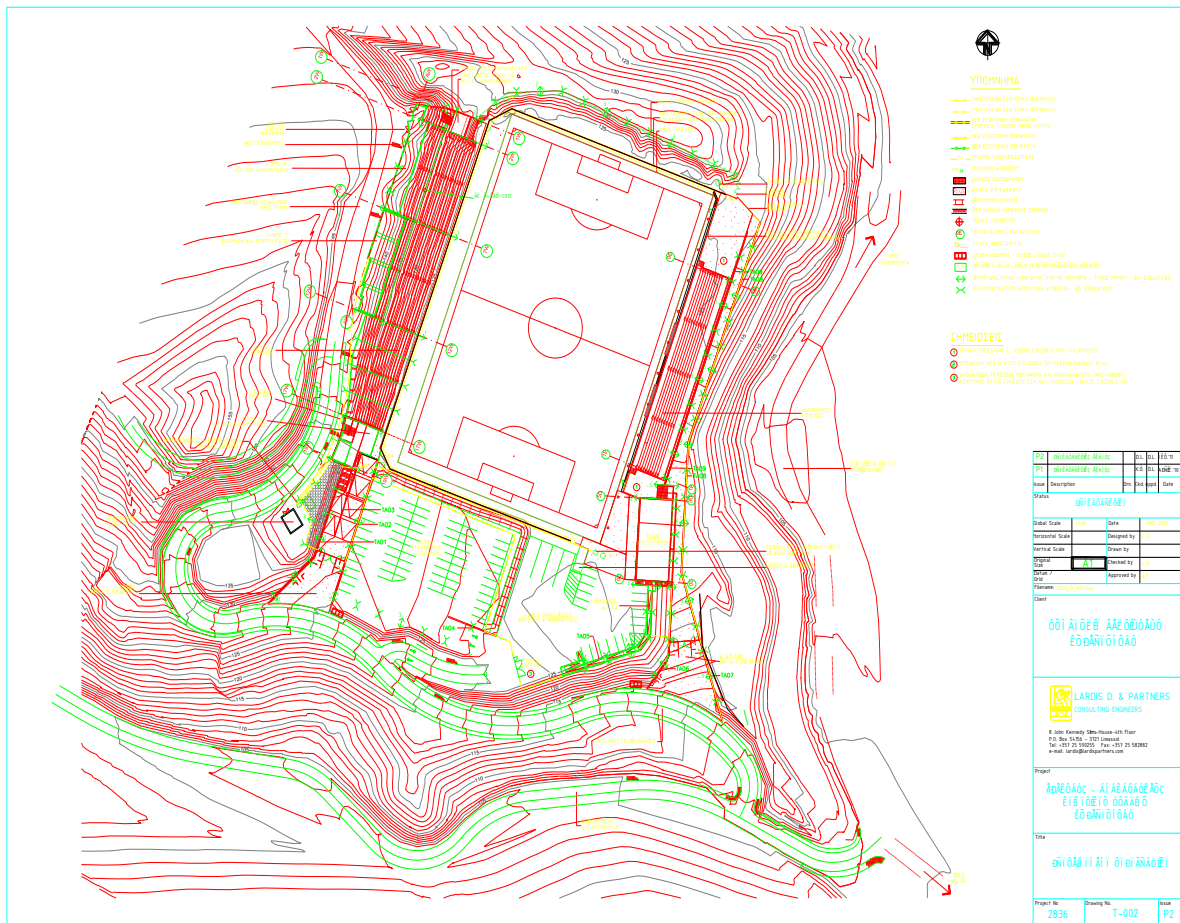
TSIRION STADIUM ROOF GRANDSTAND **ARCHITECTS – CIVIL ENGINEERS**



CIVIL & STRUCTURAL ENGINEERING **SAMPLES OF SPECIAL PROJECTS**



ENVIRONMENTAL INFORMATION CENTRE – EPISKOPI, PAPHOS



KYPEROUNTA STUDIUM
DESIGNED ACCORDING TO FIFA REGULATIONS FOR
CATEGORY A GAMES ON A MOUNTAIN 1500M A.S.L.
ARCHITECTS, ENGINEERS, E&M, QS
RESPONSIBILITIES: DESIGN AND SUPERVISION.



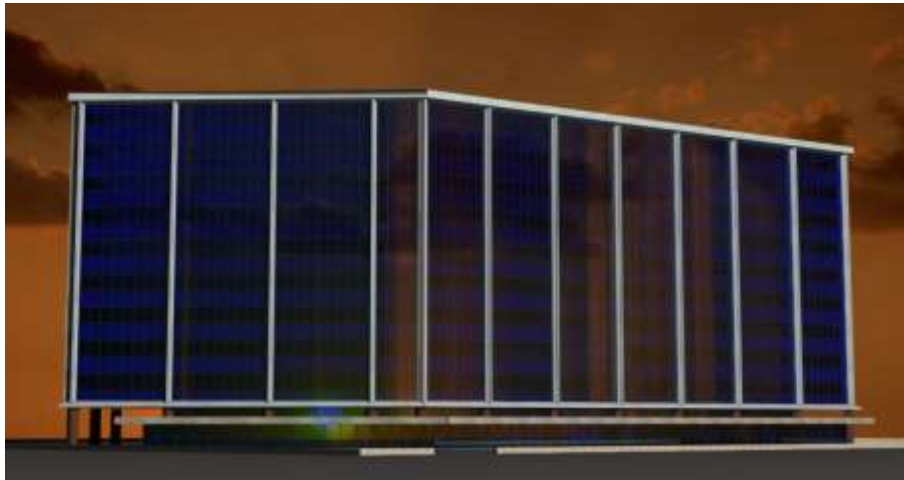
CIVIL & STRUCTURAL ENGINEERING
SAMPLES OF COMMERCIAL PROJECTS



LOPHITIS BUSINESS CENTRE BY DAY AND NIGHT – ARCHITECTS – CIVIL ENGINEERS



CIVIL & STRUCTURAL ENGINEERING **SAMPLES OF COMMERCIAL PROJECTS**



ATLAS BUSINESS CENTRE (BUCHAREST) - CIVIL ENGINEERS



CALARASI BUSINESS CENTRE(BUCHAREST) – ARCHITECTS –ENGINEERS



ELLADION BUILDING – ARCHITECTS - ENGINEERS



CIVIL & STRUCTURAL ENGINEERING
HOSPITAL AND RELATED PROJECTS



NICOSIA GENERAL HOSPITAL (ABOVE 115000 S.M.)
CIVIL & STRUCTURAL ENGINEERS



CYPRUS HOSPITALS' LAUNDRY – CIVIL ENGINEERS



CIVIL & STRUCTURAL ENGINEERING SAMPLES OF SCHOOL PROJECTS



**NICOSIA NURSING SCHOOL.
CIVIL & STRUCTURAL ENGINEERS**



**GERMASOYIA PRIMARY SCHOOL
JOINT VENTURE WITH ARCHITECTS HARIS FEREOS ASSOCIATES.**



POLIS TECHNICAL SCHOOL - ARCHITECTS –CIVIL ENGINEERS



CIVIL & STRUCTURAL ENGINEERING SAMPLES OF SCHOOL PROJECTS



HALCOUTSA PRIMARY SCHOOL – LIMASSOL
**RESPONSIBILITIES: ARCHITECTURAL, CIVIL, STRUCTURAL,
E&M, Q.S. DESIGN & SUPERVISION**



CIVIL & STRUCTURAL ENGINEERING

SAMPLES OF RESIDENTIAL PROJECTS



LOUKIAS PAPAGEORGIOU PROJECT - LIMASSOL



ELEA GOLF & SPA RESORT: MASTER PLAN – PARCELS 2 AND 3
RESPONSIBILITIES: FULL CIVIL & STRUCTURAL ENGINEERING DESIGNS AND SUPERVISION,
INCLUDING INFRASTRUCTURES. TOTAL CONSTRUCTION COST €35,000,000

OTHER HOUSING PROJECTS, ARCHITECTS & STRUCTURAL ENGINEERS





CIVIL & STRUCTURAL ENGINEERING **SAMPLES OF SEISMIC STRENGTHENING PROJECTS**



SEISMIC STRENGTHENING OF CYPRUS TELECOMMUNICATION AUTHORITY BUILDINGS



SEISMIC STRENGTHENING OF POLIS TECH. SCHOOL **RESPONSIBILITIES: ALL SERVICES**



SEISMIC STRENGTHENING OF YEROSKYOY B PRIMARY SCHOOL **RESPONSIBILITIES: ALL SERVICES**

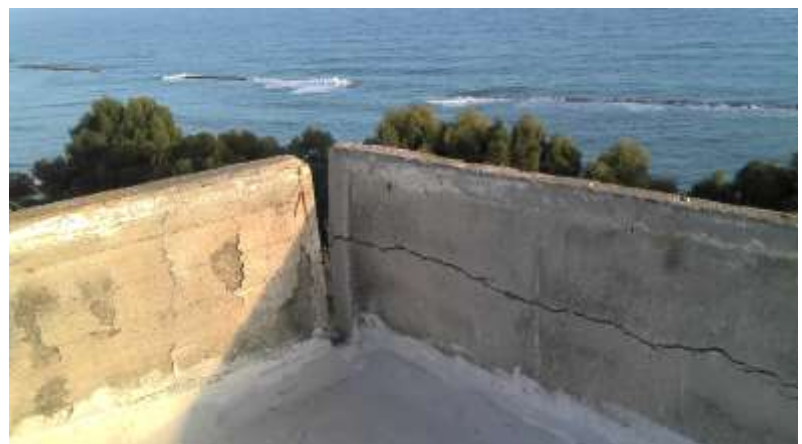


CIVIL & STRUCTURAL ENGINEERING **MAINTENANCE – REPAIRS – STRENGTHENING PROJECTS**



KANIKA ENAERIOS COMPLEX URGENT REPAIRS AND STRENGTHENINGS - MAINTENANCE
12 MULTISTOREY BUILDINGS IN TOTAL 580 APPARTMENTS, 32 OFFICES AND 88 SHOPS

RESPONSIBILITIES: FULL TECHNICAL SERVICES AND SUPERVISION





CIVIL & STRUCTURAL ENGINEERING **SAMPLES OF FOUNDATION PROJECTS**





CIVIL & STRUCTURAL ENGINEERING **SAMPLES OF INDUSTRIAL PROJECTS**



DHEKELIA POWER STATION PHASE 3 – CIVIL ENGINEERS (IN ASSOCIATION)

SABIYA POWER STATION 2400MW



The firm has carried out the design of the following parts of the Power Station.

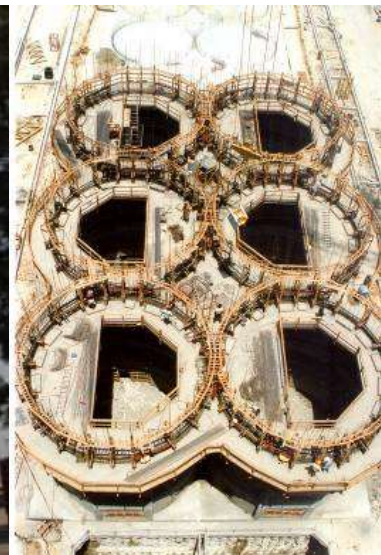
- (1) The Whole Tank farm which includes Crude Oil Tanks, Heavy Fuel Oil Tanks, Band Walls, Pipe Supports, Reducing Stations
- (2) Fuel Oil Pump House A & B
- (3) Foam building
- (4) Gas Scrubbers and Pressure Reducing Station
- (5) Steam Transformer Area
- (6) Fuel Oil Electrical Buildings A and B
- (7) PIG Receiving Station
- (8) Metering Station

The firm has undertaken the checking of calculations and drawings prepared by Merz and McLellan for the following structures:-

- (1) Cable Tunnels including Junctions
- (2) Seal Weir Structure
- (3) Circulating Water Culverts
- (4) Outfall Structure



CIVIL & STRUCTURAL ENGINEERING **SAMPLES OF INDUSTRIAL PROJECTS**



EXTENSION OF LIMASSOL GRAIN SILOS (IN ASSOCIATION)
ARCHITECTS –CIVIL ENGINEERS



NICOSIA SEED SILOS (IN ASSOCIATION)



CIVIL & STRUCTURAL ENGINEERING **SAMPLES OF INDUSTRIAL PROJECTS**

CYPRUS HOSPITALS' LAUNDRY – CIVIL ENGINEERS





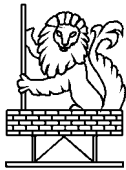
CIVIL & STRUCTURAL ENGINEERING **SAMPLES OF CAR PARK PROJECTS**



LIMASSOL MULTI-STOREY CAR PARK. (WORKING FOR STEEL FABRICATOR)



NICOSIA GENERAL HOSPITAL CAR PARK
(CIVIL ENGINEERS)



CIVIL & STRUCTURAL ENGINEERING
SAMPLES OF CAR PARK PROJECTS



LIMASSOL MUNICIPALITY CAR PARK AND DEVELOPMENT.
DRAWINGS FOR BIDDING PURPOSES D.B.F.O. (DESIGN AND BUILD FINANCE OPERATION)



CIVIL & STRUCTURAL ENGINEERING **SAMPLES OF ROAD & HIGHWAY PROJECTS**

LIMASSOL TO PAPHOS HIGHWAY **(IN ASSOCIATION WITH HYDER CONSULTING)**





CIVIL & STRUCTURAL ENGINEERING **SAMPLES OF ROAD & HIGHWAY PROJECTS**

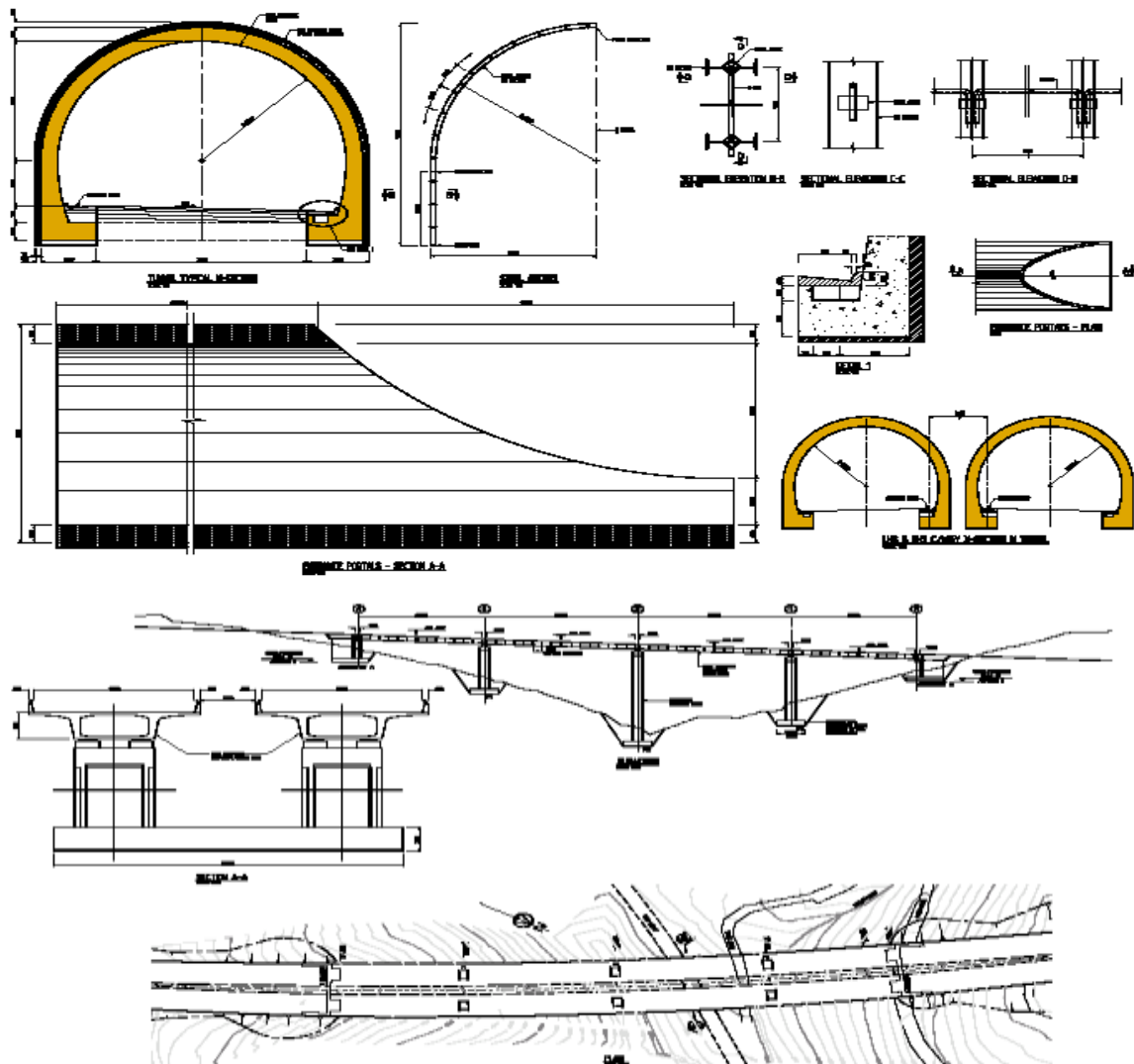
DEKELEIA - FAMAGUSTA HIGHWAY **(IN ASSOCIATION WITH HYDER CONSULTING)**





CIVIL & STRUCTURAL ENGINEERING SAMPLES OF ROAD & HIGHWAY PROJECTS

OUTLINE DESIGN FOR THE NEW PAPHOS – POLIS HIGHWAY (IN ASSOCIATION WITH SCOTT WILSON)





CIVIL & STRUCTURAL ENGINEERING **SAMPLES OF ROAD & HIGHWAY PROJECTS**



REHABILITATION OF 50 KM OF ROADS IN NICOSIA



URBAN ROADS AND ROUNDABOUTS



**FEASIBILITY: CONSTRUCTION OF LINK ROAD
BETWEEN LIMASSOL PORT AND
LIMASSOL - PAPHOS HIGHWAY**



FEASIBILITY STUDIS FOR HIGHWAY WIDENING (PHOTO: NICOSIA AGIA VARVARA HIGHWAY)



CIVIL & STRUCTURAL ENGINEERING **SAMPLES OF ROAD & HIGHWAY PROJECTS**



MAIN ROADS IMPROVEMENTS (TRAHONI – CYPRUS)



DESIGN & REGULATING PLAN – YEROSKIPOS NORTHERN BY PASS.



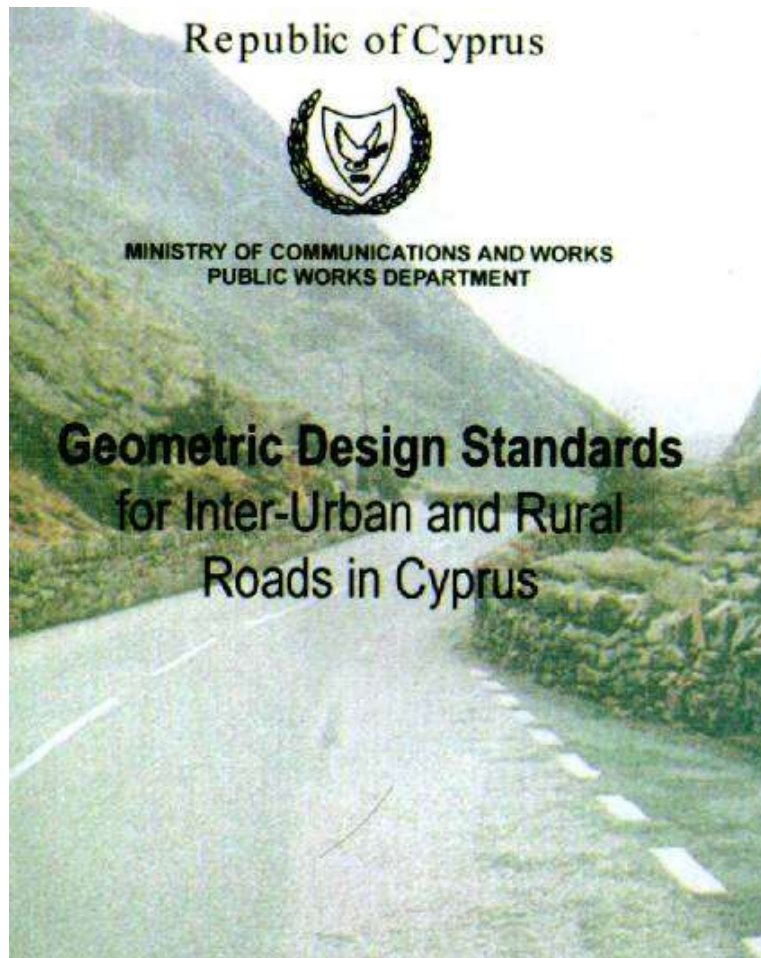
DHEKELIA FAMAGUSTA
FEASIBILITY & ENVIRONMENTAL STUDY



ERIMI – PAPHOS



CIVIL & STRUCTURAL ENGINEERING **SAMPLES OF ROAD & HIGHWAY PROJECTS**



**EDITING OF CYPRUS GEOMETRIC DESIGN STANDARDS FOR
INTER – URBAN AND RURAL ROADS IN CYPRUS (IN ASSOCIATION)**



ROAD IMPROVEMENT IN LARNAKA



MAMONIA TERRANE

LITHOLOGY

Anastrophic grade metamorphic (amphibolites, gneisses, hornblende gneiss, metabasites, quartzites, mafic gneisses) and mafic, felsic, granitic, gneiss (BIOGEO GROUP)

GROUP /
FORMATION

Rioa Varvara

EPOCH /
PERIOD

U. CRETACEOUS

Lithologies: mafic, mafic gneisses, amphibolites, gneisses and quartzites (amphibolites) (Cretaceous) / Sedimentary: sandstone with mafic and amphibolites (BIOGEO GROUP) / Quartzites and sandstones with fossiliferous remains, metamorphic and sedimentary (Cretaceous) / Metasandstone and quartzites (BIOGEO GROUP)

ENVIRONMENTAL & TECHNO - ECONOMIC STUDIES

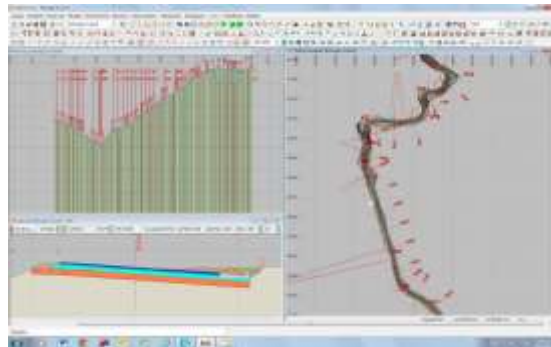
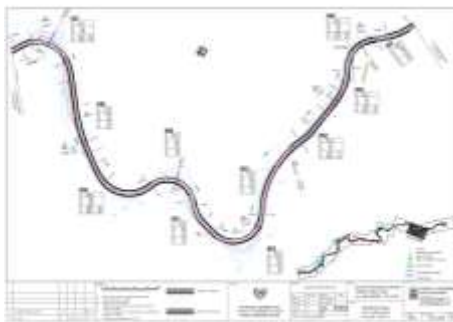


CIVIL & STRUCTURAL ENGINEERING SAMPLES OF ROAD & HIGHWAY PROJECTS

MOUNTAINOUS ROADS



KYPEROUNTA FOOTBALL STADIUM ROADS. RESPONSIBILITIES: DESIGN & SUPERVISION



MONAGRI - PERA PEDI ROAD IMPROVEMENT. RESPONSIBILITIES: DESIGN TENDER DOCUMENTATION. TOTAL LENGTH 9 KM. (CURRENT PROJECT)



CIVIL & STRUCTURAL ENGINEERING SAMPLES OF BRIDGE PROJECTS



SECTION ERIMI – EVDHIMOU VIADUCTS (IN ASSOCIATION WITH HYDER CONSULTING)



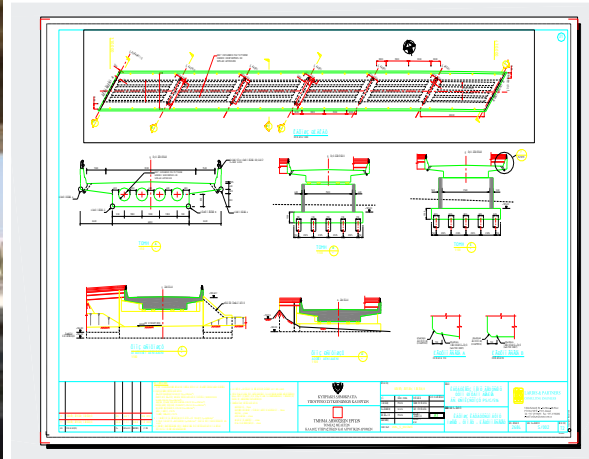
TIMI OVERPASSES



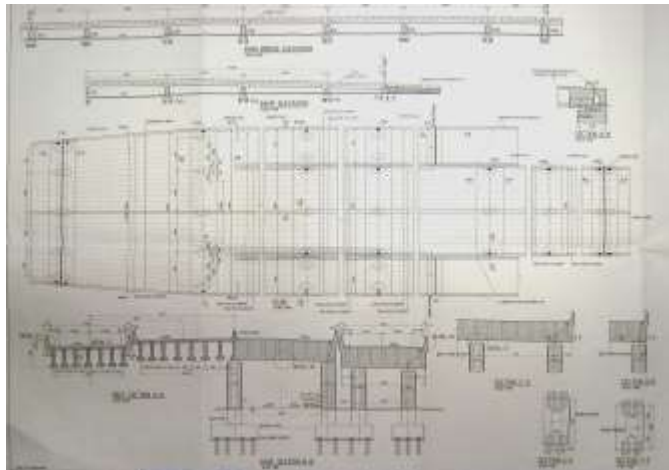
CIVIL & STRUCTURAL ENGINEERING SAMPLES OF BRIDGE PROJECTS



**LIMASSOL ROUNDABOUTS BRIDGE VIADUCT
(1100M LONG)**



**YIALIAS BRIDGE - CYPRUS
(IN ASSOCIATION WITH ROUGHTON INTERNATIONAL)**



**GHANA BRIDGES - KWAME NKRUMAH CIRCLE THE MAIN ELEVATED STRUCTURE IS 720 METRES LONG
(SUB CONSULTANTS FOR CONCEPT & DESIGN SERVICES).**



FOOTBRIDGE IN NICOSIA (ARCHITECTURAL COMPETITION MODEL)



CIVIL & STRUCTURAL ENGINEERING **SAMPLES OF BRIDGE STRENGTHENING**

STRUCTURAL ASSESSMENT AND STRENGTHENING DESIGN SERVICES.



ASPROKREMOS BRIDGE



ZYGOS BRIDGE STRENGTHENING



MANAMA – MUHARRAQ BRIDGE- BAHRAIN

UPGRADING – REPLACEMENT OF BRIDGE SAFETY PARAPETS





CIVIL & STRUCTURAL ENGINEERING
ASSESSMENT STRENGTHENING MAINTENANCE OF
STONE BRIDGES



PERISTERONA BRIDGE – CYPRUS



CIVIL & STRUCTURAL ENGINEERING
ASSESSMENT STRENGTHENING MAINTENANCE OF
STONE BRIDGES



SKOTINI BRIDGE CYPRUS



ARCHITECTURAL PROJECTS
LANDSCAPE PROJECTS

Project taught in various academic institutes.
Over 1,000,000 views on the web.

LANDSCAPE PROJECT. POOLE, UK





ARCHITECTURAL PROJECTS LANDSCAPE PROJECTS



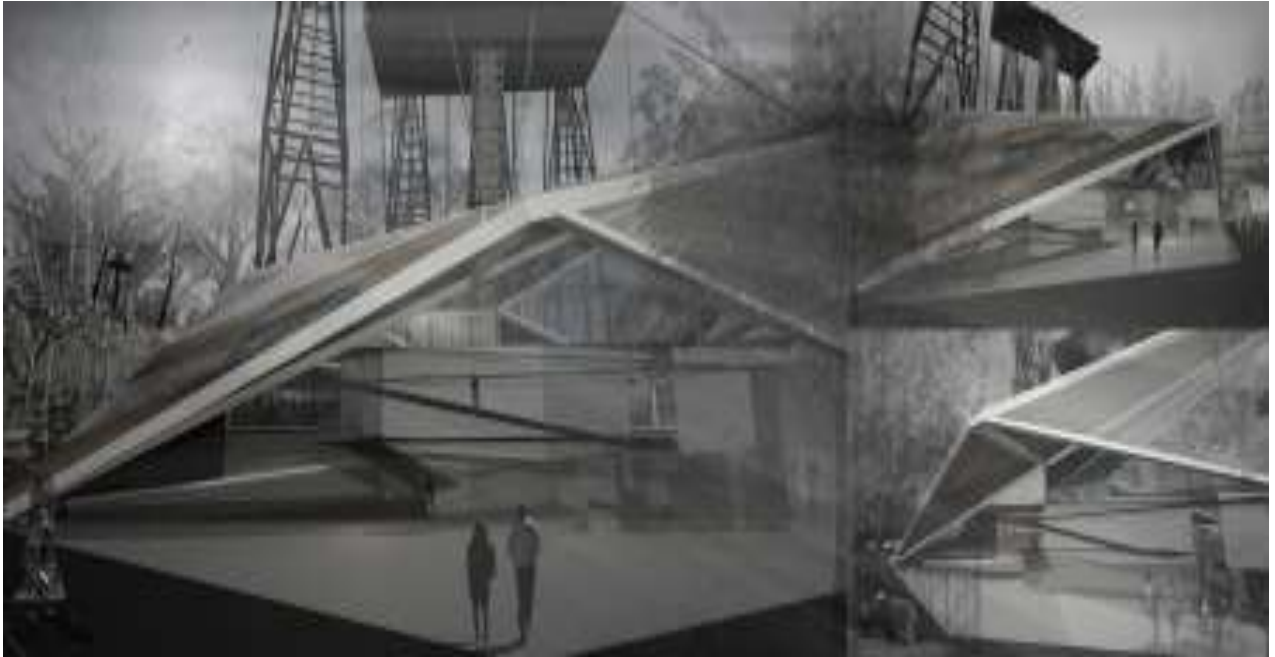


ARCHITECTURAL PROJECTS
LANDSCAPE PROJECTS





ARCHITECTURAL PROJECTS LANDSCAPE PROJECTS





ARCHITECTURAL PROJECTS SAMPLES OF COMMERCIAL PROJECTS





ARCHITECTURAL PROJECTS **SAMPLES OF COMMERCIAL PROJECTS**



LOFITIS BUSINESS CENTRE– ARCHITECTS –CIVIL ENGINEERS



ARCHITECTURAL PROJECTS **SAMPLES OF COMMERCIAL PROJECTS**



CALARASI BUSINESS CENTRE(BUCHAREST) – ARCHITECTS –ENGINEERS



ELLADION BUILDING – ARCHITECTS – ENGINEERS



ARCHITECTURAL PROJECTS **SAMPLES OF RESIDENTIAL PROJECTS**



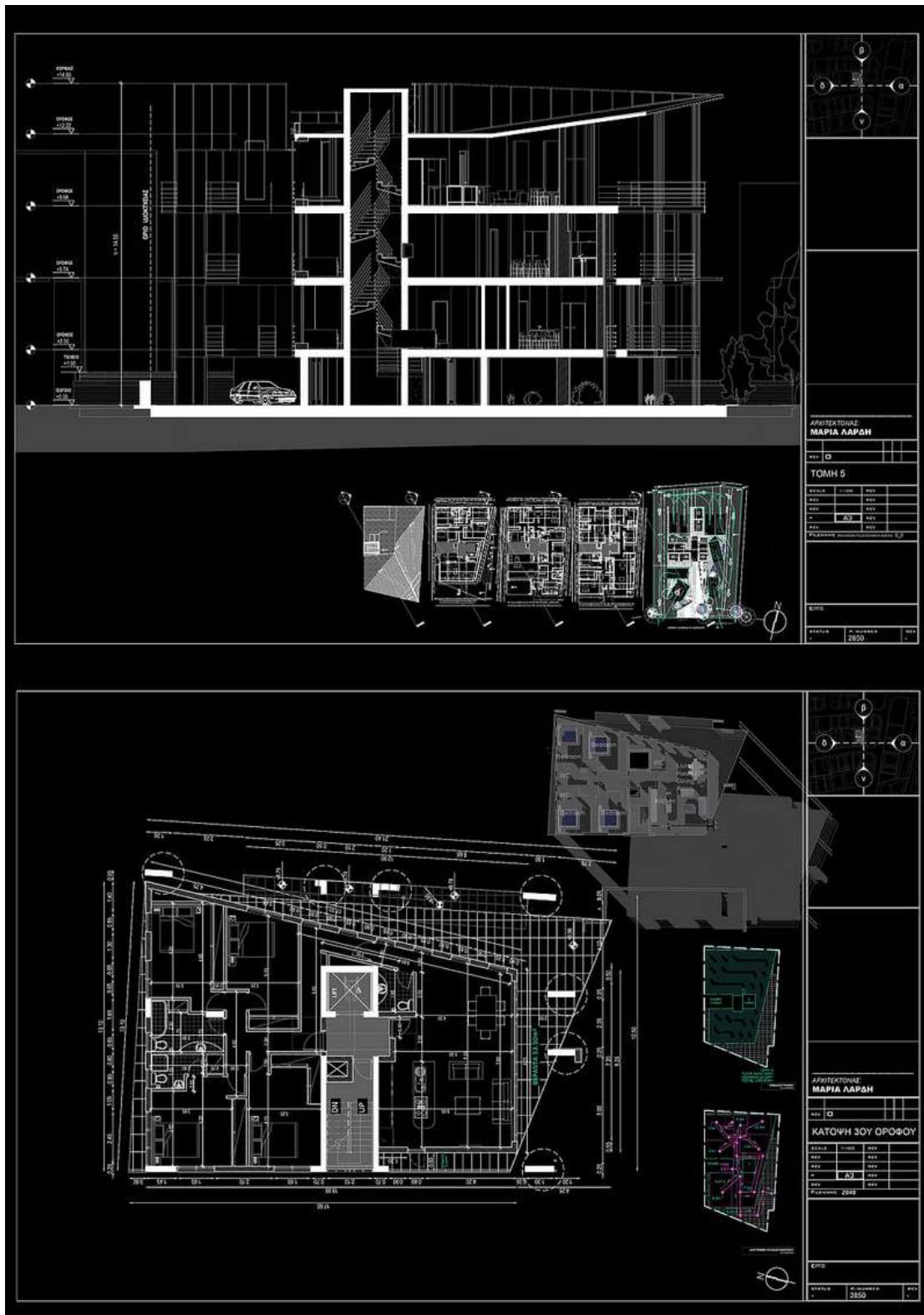
NICOLAOU RESIDENCE – LIMASSOL



VILLA IN PETROU TSIROU, LIMASSOL – ARCHITECTS – ENGINEERS



RESIDENCES LIMASSOL





ARCHITECTURAL PROJECTS SAMPLES OF RESIDENTIAL PROJECTS

IRIS HOUSE ENTRANCE RENOVATION – LIMASSOL



Renovated



Before renovation



SAMPLES OF QUANTITY SURVEYING PROJECTS



OLYMPIC RESIDENCE LIMASSOL



**HIGH SCHOOL WEST OF LIMASSOL
CENTRAL**



**RENOVATION OF THE
COOPERATION**

BANK, LIMASSOL



About us

1. **Date of Establishment:** 1982
2. **Head Office Address:** 8 John Kennedy Str., Iris House, 4th Floor,
Limassol, Cyprus
3. **Email address:** lardis@lardisconsulting .com
4. **Telephone No.:** +357-25-590255 **Fax No.:** +357- 25-582882
5. **Correspondence Address:** P.O. Box 54156, CY 3721 Limassol, Cyprus
6. **Main line of Business:** Consulting Civil & Structural Engineers
Architects, Quantity Surveyors
7. **The firm has completed projects in the following countries:**

Europe: Cyprus, Greece, UK, Romania
Middle East: Dubai, Bahrain, Qatar, Saudi Arabia, Jordan, Lebanon, Syria, Kuwait
Africa: Libya, Algeria, Ghana
America: Trinidad &Tobacco, Jamaica
8. **Website:** <http://www.lardisconsulting.com/>

Our mission

Offer our services improving quality of life.

To respect the clients budget for any project

To offer the maximum possible quality of services

Once any project' consultancy financial agreement is reached, to forget expenses and concentrate to the quality of services.

To be proud when we think and see our completed projects.

To offer the latest technology towards aesthetics, functionality, safety and value.



Services

SCHEME DESIGN

Contact us at any stage of your project.

As advisors we undertake several scheme designs, we carry out analysis and further study to find the best decision .

CONCEPT DESIGN

Contact us at the start.

We can bring in concepts towards an excellent project

Through our advice and our work, all disciplines will be considered optimising the project's construction and running costs

DETAIL DESIGNS

We design using our experience and expertise and any code of practice suitable for the projects. We succeed excellent project designs minimising costs and contractors' claims adding value to the project. We do not hesitate to repeat our work if needed, as to find the solution with the minimum cost.

TENDERING PROCEDURES

We will prepare contract documentation, we will advise on the type of tenders to be asked. We will evaluate tenders, we will clarify the misleading issues in tenders received, we will negotiate towards the client's and the project's benefit. We will prepare final contract documentation to be signed.

STRUCTURAL APPRAISALS

We will inspect your property and give all assistance needed for maintenance, repairs and/or strengthening required. We will assist you throughout the process, until your project is back to its originally desired form.

CONSTRUCTION CONTRACT DOCUMENTATION

During Construction we will do all correspondence required, keep all records, and at the end of the project we will deliver all projects information to the client.



SITE SUPERVISION

We will be there and ensure that the desired quality, safety and timing is realistic.

PROJECT MANAGEMENT

We will look after the management of the project controlling all required issues such as consultants, contractors, authorities, cash flow, timing, deliverables and payments.

BILL OF QUANTITIES

We will estimate the cost of the project at all stages.

Depending on the type of tender, we will include detailed quantities, ensuring that the client is paying what he receives.

The client will have the project's final accounts at the end of the project.

CONSULTANTS COORDINATORS

We have experience at all construction disciplines. We know the required services from all type of consultants and the requirements from contractor's and suppliers.

Through this experience we will coordinate the various consultants as to eliminate the chance of delays and to receive the maximum possible services from all.

PROPERTY INVESTMENT ADVISORS

Through our experience we will advise clients considering to an investment involving construction. We will advise the best type of project, scope, timing, and programming.



Our Team

Dionyssios Lardis, Director

Civil Engineer

BSc (Hons), MSc, FIStructE, FIHT. Ceng

In charge for ensuring that excellent services are delivered by the firm

- Over 35 years of experience in design management and business development matters in various countries.
- Management of a consulting firm of 70 persons in three different countries.
- Design and build expert in lowering overall construction cost, timing and increase project profitability
- Extensive experience in construction issues.
- Associate to international consultants for various projects in Cyprus, Middle East, and Africa
- Excellent record in all construction issues up to final handling over and final accounts.
- Coordinating of consulting teams with clients and contractors with success in handling differences in various construction and investment related problems

Maria Lardi

Architect

BA, MA, Prof. Dip. Architecture, RIBA II with Distinction

In charge for Architectural and Landscape services

Maria is in charge of the Architectural section. As a young and promising Architect (her architectural and landscape website has more than 1,000,000 viewers, is responsible for concept and preliminary designs of the firm. Further is managing experienced Architects as to complete design and supervision work needed.



Andreas Lardis
Civil Engineer
M.Eng. (First class Honours)

In charge of Civil and Structural engineering Designs and supervisions

Andreas is in charge for the completion of all Civil & Structural Engineering projects.
He is managing experienced Civil & Structural Engineers in any field required, responsible for the appropriate resourcing of each project.

Christos Ioannou
Quantity Surveyor
BSc, MSc, MRICS

In Charge of cost control contract documentation and quantity surveyors services.

The above are seconded by our staff and more than 400 associated specialists from Cyprus and Overseas, in all construction disciplines.

